

# COVI Mental - DocuMental in times of COVID 19

## The problem

Fig 1. Share of the population with Mental health disorders

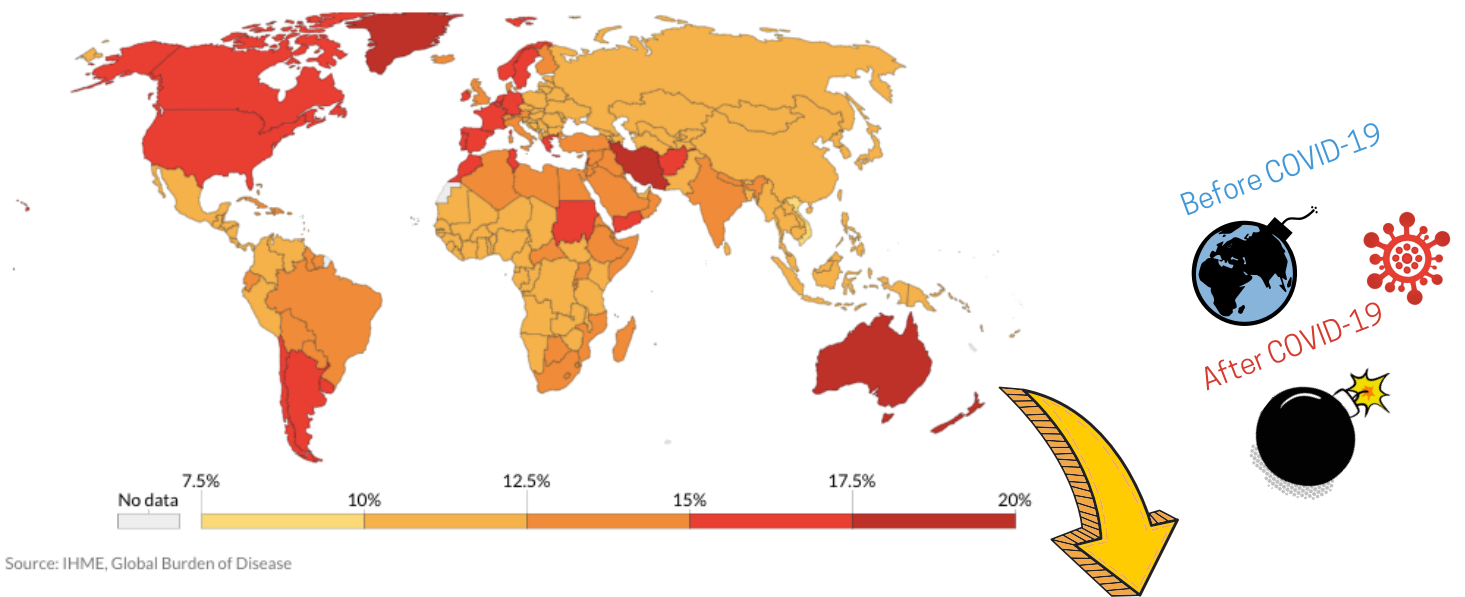
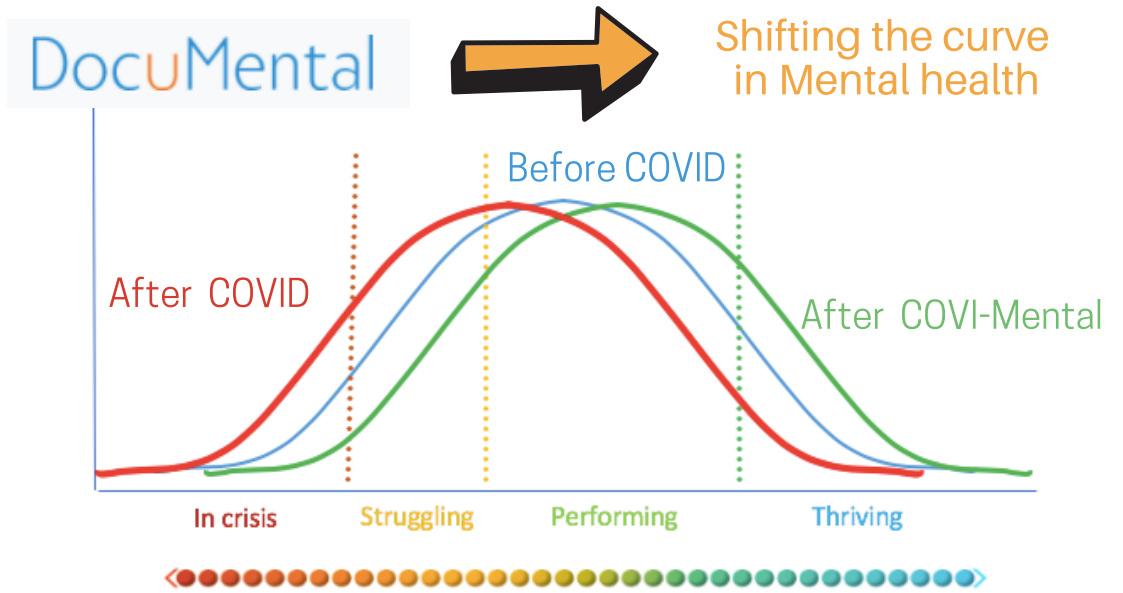
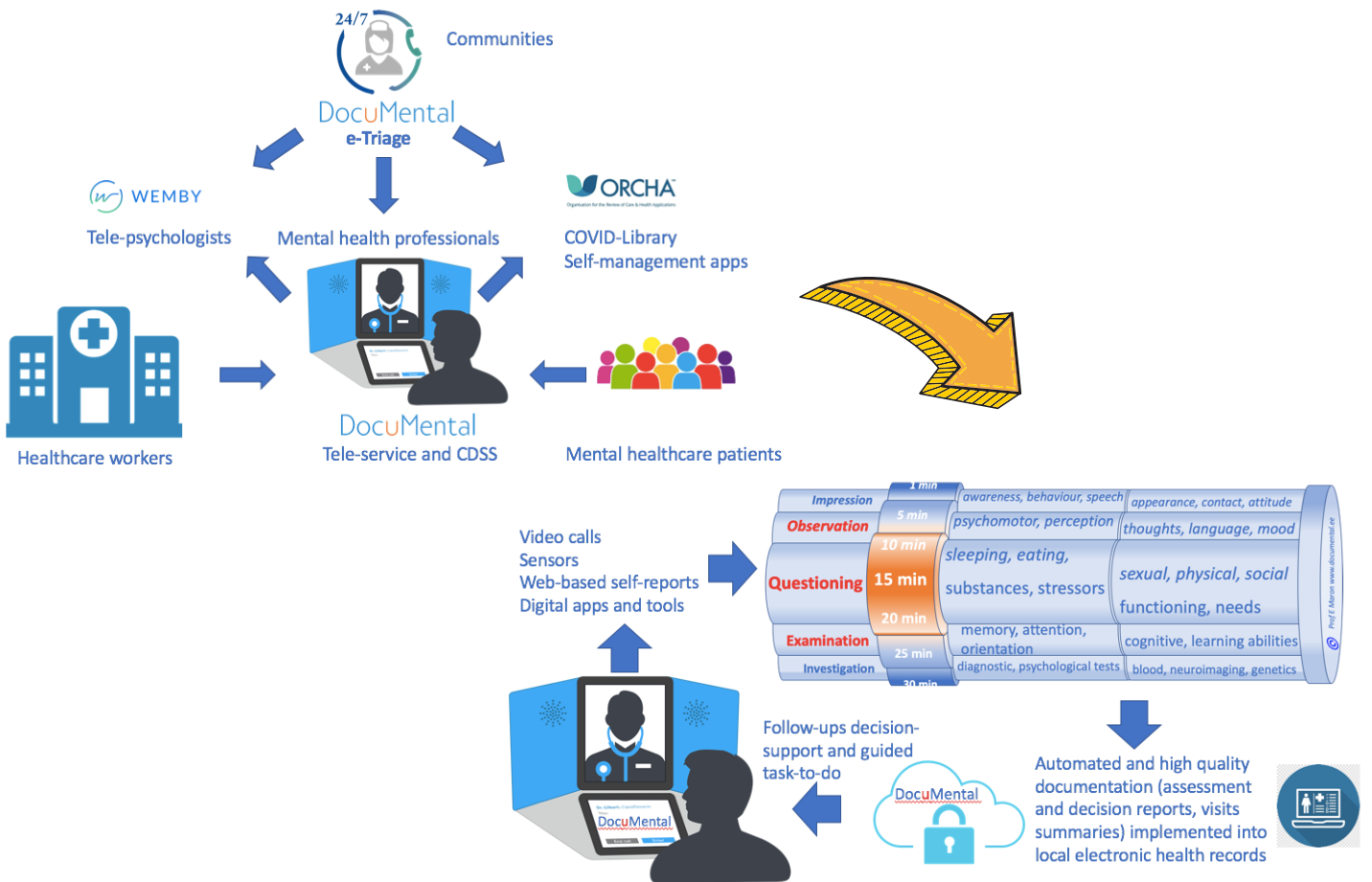


Fig 2. Distribution of the population across the Mental health continuum



## The solution



## Comparative analysis

### DocuMental vs. Business as usual

Traditional clinical workflow			
Diagnosis based on first impression (within 5 min)	High rate of misdiagnosis (up to 70%) Gap in treatment need and safety (up to 65%)	Spending hours on paperwork (up to 50% of working time for each patient)	Less time for patients and team
DocuMental workflow			
Diagnosis based on ICD-10 criteria (within 20 min)	Higher accuracy (100% ICD-10 based) Higher safety (at least 80%)	Spending minutes on paperwork	More time for patients and better communication with team

### DocuMental vs. Digital health solutions

	DocuMental	Apps	Telehealth
Decision support system	knowledgebase	simple algorithms	expert-centric
Mental health diseases	all mental problems	only 1-3 specific	not specialized
International guidelines	diagnostic, treatment	No	No
Mistake prevention	indicator-based	limited alarms	No
Communication	bilateral, any time	bilateral, any time	bilateral, visit time
Self-report	online, video, chatbot	online, chatbot	video
Caseload support	strong	weak	moderate
EHR integration	Yes	No	No

## Impact

- Scalability
  - DocuMental: already supports remote consultancy in two Estonian clinics
  - Wemby: tele-psychology sessions per day (40% increase due to COVID crisis)
  - Orcha: customized more than 70 healthcare organizations - COVID library set-up
- Short-term impact
  - Appropriate, helpful and internationally supported approach from beginning
- Long-term impact
  - Preventive, cost-effective, sustainable



- DocuMental is EIT-Health child
  - Born in 2016 with EIT-Health Commercialization Funding
  - Grew up to ILM8 in 2019 with EIT-Health RIS Local Development Project
  - It is only SME providing solution for depression in 25mil EUR Innovative Medicines Initiative project (www.eu-pearl.eu)
  - According to EC H2020 revision "it has potential to transform mental healthcare"
  - It is supported by professional society from 14 countries and GAMIAN
- DocuMental and its partners are strong enough and want to help EIT-Health and communities to fight against COVID-19 together and save lives!

DocuMental